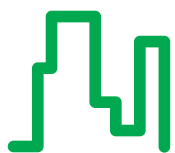


Multiple tenant metering made simple.

PowerLogic® E4800

multi-circuit energy meter



Buildings



Retail



Multi Residential

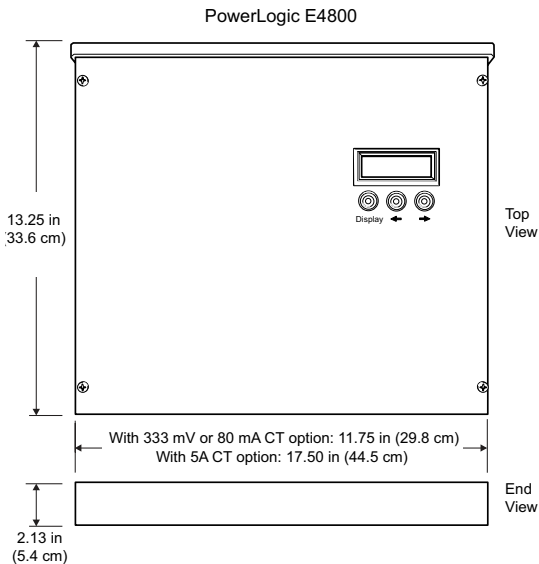


by Schneider Electric

Simple, accurate tenant or departmental metering

The compact PowerLogic E4800 multi-circuit energy meter enables reliable metering of individual tenants with a low installation cost-per-point. The meter combines revenue-accurate electrical sub-metering with advanced communications technology. It is ideal for multi-tenant or departmental metering applications within office towers, condominiums, apartment buildings, shopping centers and other multi-user environments. Meters can be ordered individually or as part of *integrated power centers* (IPC), including panelboards and switchboards.

The PowerLogic E4800 meter delivers hi-density metering without occupying floor space. It uses existing wiring to support multiple single-phase or three-phase circuits. Multiple meters can be combined to support an unlimited number of suites. Metered data can be transmitted over an existing Ethernet or phone network, without the need for a dedicated service. Interval energy data is stored in onboard memory and is "pushed" to software on a defined schedule using industry-standard file transfer protocol (FTP).



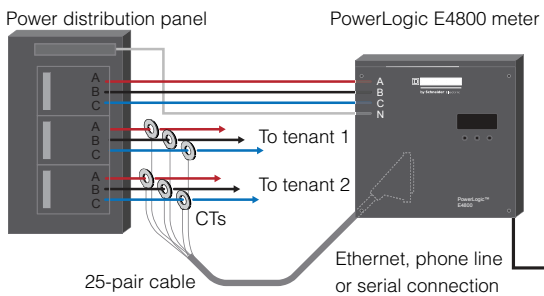
PowerLogic E4800 meter dimensions.

Applications

- > Industrial
- > Commercial
- > Residential

Benefits

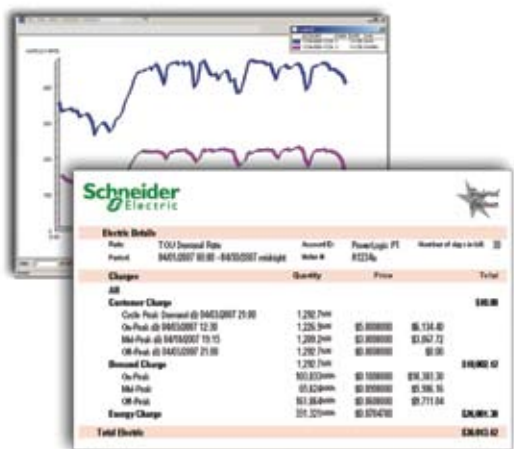
- > Provide accurate energy sub-billing to tenants.
- > Empower tenants with information about their energy usage, allowing them to manage their total consumption while helping to reduce operational costs and offer more competitive lease rates.
- > Accurately allocate costs to departments or processes, exposing wasteful energy practices, identifying periods of high energy usage and revealing cost saving opportunities.
- > Establish a "green" efficiency by qualifying for points within the *LEED Green Building Rating System*.
- > Verify utility charges using accurate, revenue-grade meters.



Typical meter connections to a multi-circuit power distribution panel.

Features

- > Fast installation in new construction and retrofit applications: modular wiring, maintenance-free design
- > Flexible connection: single- or three-phase metering, up to 24 circuits
- > Measurements: bi-directional real and reactive energy, apparent energy, power, per phase voltage and current, and power factor
- > Accuracy compliance: meets ANSI and IEC standards
- > Data storage: on-board, non-volatile memory, unaffected by power outage
- > Communications: use existing Ethernet network (supports real-time monitoring), phone or fax line (5 min. a day for reporting)
- > Digital pulse inputs: collect readings from other electric, water or gas meters
- > Maintenance flags: identify potential problems or risks to reliability
- > Integrate with easy-to-use PowerLogic software.
- > Front panel display: local access to meter data



Optional PowerLogic on-site software or web-hosted service can be used for bill preparation, energy analysis, and data export to other applications or to billing services.



Installation

A PowerLogic E4800 multi circuit energy meter can meter up to 24 single-phase / one-CT circuits, 12 single-phase / two-CT circuits, or 8 three-phase / three-CT circuits. Three models offer a choice of CT secondary ratings.

Description	Specifications
Voltage input (reference voltage)	
Service type	Single- and three-phase, plus neutral
Nominal full scale	208 Y / 120 V, 120 V / 240 V Higher voltages supported using potential transformers.
Tolerance	+/- 10%
Frequency	50 and 60 Hz
Current transformer (CT) type	
Model E4805	5A, split- or solid core
Model E4833	0.333 V, split- or solid-core
Model E4880	80 mA, solid-core
Control power	
Input rating	120 Vac, 125 mA, 50/60 Hz

General specifications

Description	Specifications
Weight	E4805: approx. 6 lbs (3.0 kg) E4833 / E4880: approx. 3 lbs (1.5 kg)
Safety and emissions	CSA C22.1, TUV 61010, TIA 968-A, CS-03, FCC Part 15 Subpart A & ICES 003
Operating temperature	-40 °C to 70 °C
Operating humidity	0% to 90% non-condensing
Enclosure type	Type 1 (indoor or enclosed outdoor use)
Maximum altitude	6562 ft (2000 m)
Pollution degree	2

Measurements

- > Energy: real (kWh received/delivered), reactive (kvarh received/delivered), apparent (VAh)
 - > Total system accuracy: +/- 0.5% (when used with 0.3% class or better CTs)
 - > Accuracy compliance: ANSI C12.1 and C12.20 Class 0.5
- > Voltage (V_{rms}) and Current (I_{rms}) per phase
- > Power: real, reactive, apparent
- > Power Factor

Front panel display

The backlit LCD features 2 lines of 16 characters. Information is quickly accessible using right and left arrow buttons to select each metering point (1 through 8, 12, or 24) and the display button to cycle through the measurements for that point.

Data logging

Energy data is stored on board the meter in non-volatile flash memory, with a programmable logging interval of 5 to 60 minutes. Total capacity is 2.4 years at 1 hour intervals, or over 200 days at 15 minute intervals. The meter can be configured to perform real-time, hourly or daily reporting to PowerLogic or third-party FTP compatible servers in standard CSV data file output format.

Digital inputs

The meter provides 2 digital inputs that can be used to accumulate and store pulses from other meters.

Communications

The meter is equipped with one Ethernet port and one V.90 telephone modem port. Supports Modbus TCP/IP, HTTP, FTP, and SNMP. The meter offers remote configuration and firmware upgrades. Real-time and status information from the meter can also be accessed using a standard web browser.

Software integration

The meter is supported by PowerLogic Tenant Metering - Commercial Edition software.

PowerLogic E4800 features

Installation	
Maximum circuits: single-pole, single-phase, three-phase	24, 12, 8 *
Display	
Backlit LCD	■
Metering	
Energy: real, reactive, apparent	■
Energy accuracy	0.5% **
Power: real, reactive, apparent	■
Power Factor	■
Voltage, Current	■
Data recording	
Interval energy	■
Communications & I/O	
Ethernet port	■
Telephone modem	■
Pulse inputs	2

* A variety of compatible CT options are available through Schneider Electric.

** Refer to Measurements section inside for more information.



PowerLogic E4800 meter as part of an integrated power center (IPC).



PowerLogic E4800 meter retrofitted to an existing power panel.

Three meter models offer a choice of CT secondary ratings and installation options:

Option	E4805	E4833	E4880
5A	•		
0.333 V		•	
80mA			•
Split Core CT	•	•	
Solid Core CT	•	•	•

For complete information on options and help with ordering, please contact your local sales representative.

PowerLogic®



"The 2007 award recognizes Schneider Electric for its technological advancements and wide product range in the field of power quality (PQ) and energy management solutions."
Prithvi Raj, Frost & Sullivan research analyst



UL approval for USA and Canada pending



Certificate No. 002188

Visit www.powerlogic.com for more information on other PowerLogic products, applications and system solutions.

Schneider Electric - North American Operating Division

295 Tech Park Drive
LaVergne, TN 37086
Tel: 615-287-3500
www.PowerLogic.com

Safety & Security. Reliability & Productivity. Aesthetics & Comfort. Efficiency & Sustainability. Whatever your need, Schneider Electric has the solution. To find genuine Schneider Electric and Square D products, go to www.squared.com to find your nearest authorized distributor or call 1-888-SquareD.

As standards, specifications and designs develop over time, always ask for confirmation of the information given in this publication. Square D, PowerLogic and Modbus are either trademarks or registered trademarks of Schneider Electric. All other trademarks are property of their respective owners.

