

# Reduce your energy spend and carbon emissions with EnergyView Online



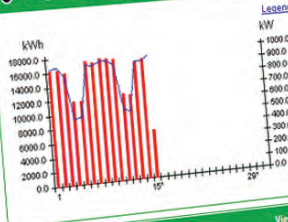
**Schneider Electric** the global specialist in energy management

EnergyView Online

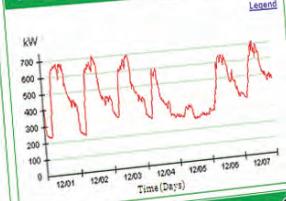
Dashboard

Logout | Help | Admin

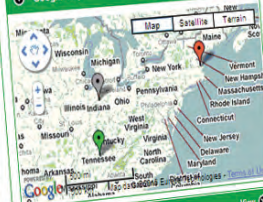
Usage History - MTD



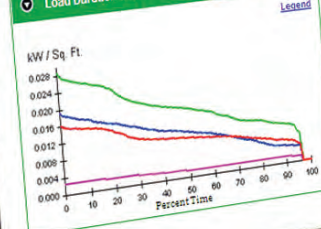
Load Profiles



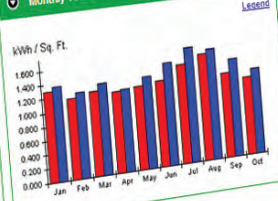
Google Map



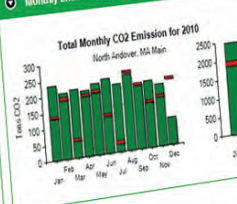
Load Duration Curve - MTD



Monthly Totals - Normalized



Monthly Emission Report 2010



**Schneider Electric**

# Save money and take control of your costs



Use our EnergyView™ online, a Remote Energy Management Web-hosted service, to easily turn your energy usage data into actionable information, accessible via a standard Web browser.

## Identify energy waste

- > Compare energy usage among similar facilities to establish benchmarks and identify poorly performing facilities
- > Normalize facility consumption against weather, production, hours of operation, square footage, and occupancy

## Reduce energy consumption

- > Use historical comparison curves to determine profiles of day-to-day, month-to-month, and year-to-year energy consumption
- > Measure the effectiveness of various energy efficiency efforts

## Save on utility bills

- > Compare your usage to your utility bills to make sure the utility is reading its meters correctly
- > Optimize equipment run hours and settings to avoid setting costly new demand peaks
- > Make accurate assessments of what utility costs would be on different utility rates using “what if” analysis tools

## Accurate, flexible reporting

- > VEE - Validation, editing and estimation tools cleanse all inputs, ensuring data is accurate and trustworthy
- > Utilize hundreds of standard EnergyView Online reports to view all near real time data quickly and easily assess energy patterns and identify savings

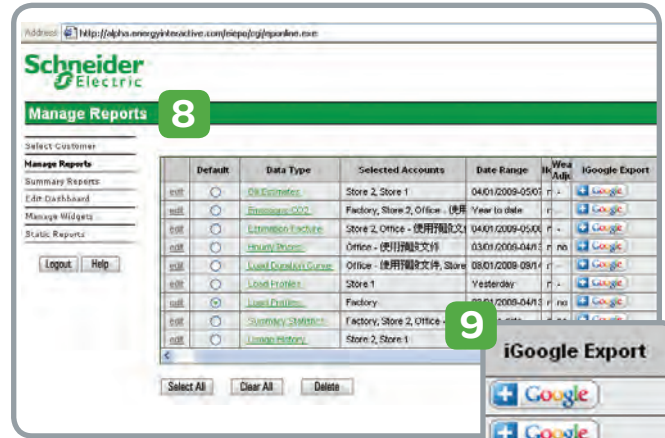
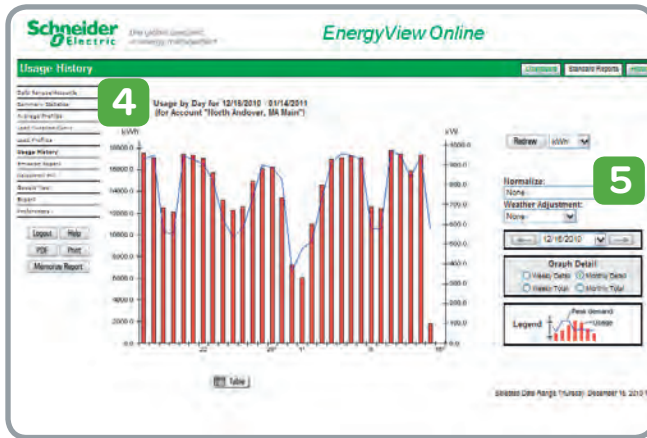
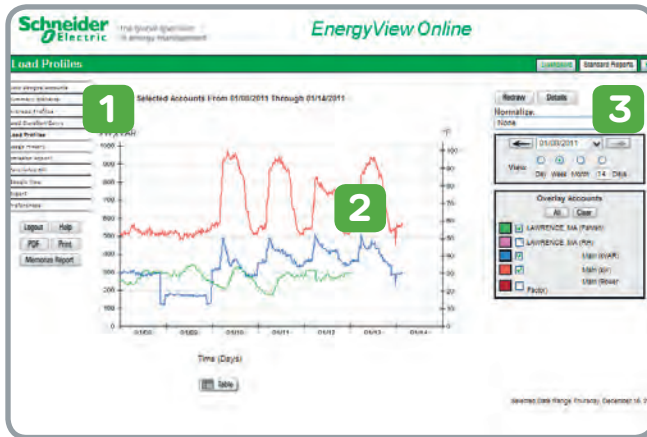
## Measure, report on, and implement energy and emission reduction initiatives

- > Hundreds of predefined energy analysis reports for viewing load profiles, usage history, and interval data in graphical and tabular formats
- > View cost summaries for individual meters or a group of meters
- > Compare consumption data between different sites or time periods
- > Identify exceptional usage patterns
- > Calculate average daily, weekly, or monthly consumption
- > Track, report, and analyze information from all utility sources including electric, water, gas, and steam
- > Receive user-defined threshold alarms via e-mail or text to proactively manage your energy
- > Analyze the energy use of a particular site over a specified time period
- > Normalization of energy information to compare similar facilities or the same facility for different time periods by square footage, units of production, occupancy, or weather
- > Estimation of energy bills and energy costs
- > Automated scheduling of e-mailed energy reports



Save energy and reduce your impact on the environment. Schneider Electric™ Energy Efficiency Solutions can help you reduce your energy consumption by up to 30%.

# Features to identify your savings



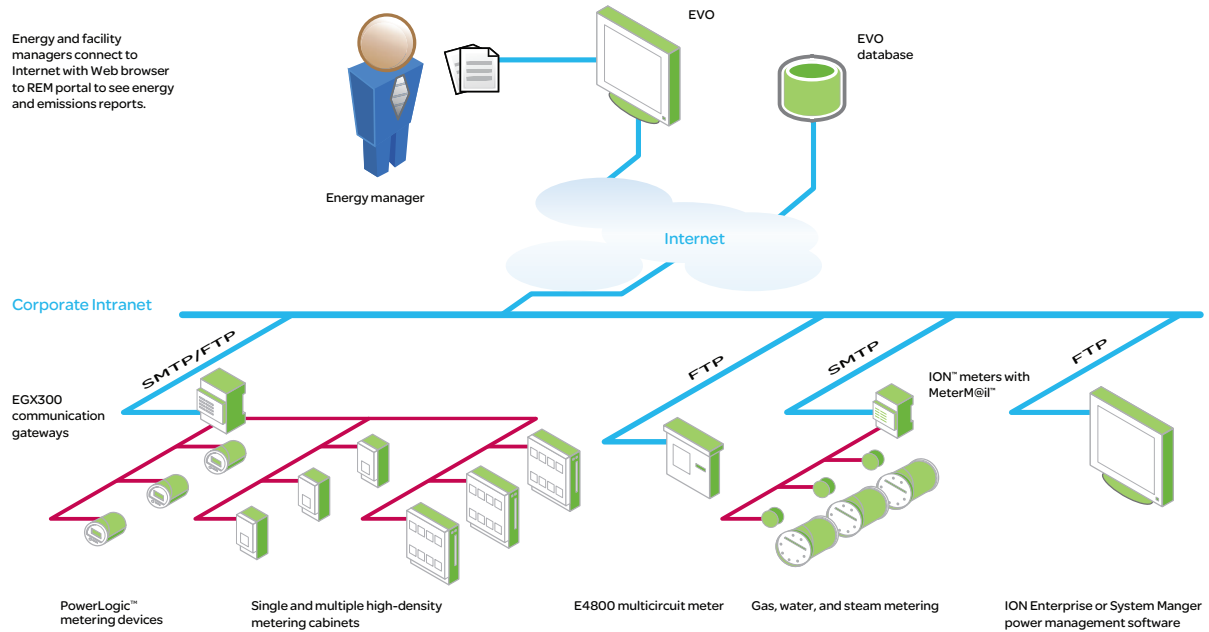
**★**  
You can't control what you don't measure.

- 1** Choose from a comprehensive list of standard reports  
Understand your organization's usage patterns, history, and costs from the list of standard reports
- 2** Find areas of improvement  
Quickly and easily identify high-impact usages such as peak demand
- 3** Dynamic reporting  
Easily adjust your date range to accurately compare and contrast usage patterns
- 4** Usage graph  
Visual display of your energy usage data
- 5** Normalize data  
Prepare accurate comparisons from one time period to another making adjustments for variables such as weather (DD and HDD) and occupancy

- 6** Web widgets  
Quickly and easily view defined reports by converting them to Web widgets that can be viewed from your EVO Embedded Dashboard View or iGoogle® page
- 7** Customized dashboards  
You decide what widgets you want to display and where, creating your own customizable dashboard
- 8** Save reports  
Save your predefined reports for easy tracking and reporting
- 9** Export reports  
Send your reports to your personal home page which will be updated in real time
- 10** Enterprise map view  
View all of your sites' performance on a single screen. Each site located on the map is color-coded based on CO<sub>2</sub> emissions compared to user-defined targets

# Connect a single meter location or an entire enterprise

## Remote Energy Management



### PowerLogic Compatible Meters and Connections:

CM4000, CM3000, CM2000 series circuit monitor  
PM700 and PM800 series power meters  
E5600 power and energy socket meter  
E4800 series multicircuit meter  
High-density metering (HDM)  
ION7650/7550 series energy and power meters  
ION8600 series energy and power meter

ION7550RTU  
EGX300 gateway  
Energy Meter  
Enercept Meter  
Third-party MODBUS/PowerLogic compatible  
WAGES via pulse inputs

## Make the most of your energy<sup>SM</sup>

Schneider Electric USA, Inc.

295 Tech Park Drive  
LaVergne, TN 37086  
Tel: 866-466-7627 Toll Free  
www.PowerLogic.com

998-2785

Design: Global Marketing, Communications Strategy, and Design

©2011 Schneider Electric. All Rights Reserved. Schneider Electric, EnergyView, PowerLogic, ION, MeterM@il, and Make the most of your energy are trademarks owned by Schneider Electric Industries SAS or its affiliated companies. All other trademarks are property of their respective owners.