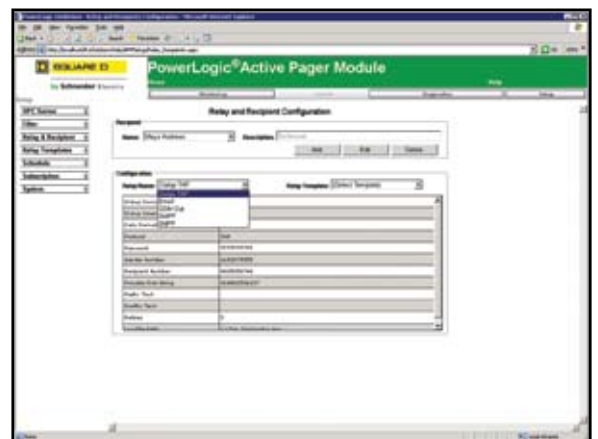




## Needing power system information to go?

PowerLogic® Active Pager module delivers timely alerts

The PowerLogic® Active Pager Module (APM) delivers timely alerts of power system events to your cell phone, pager or PC so you can be more productive and your power system more reliable. Effective alarm management is critical to maintaining a safe and reliable power system. The PowerLogic Active Pager Module (APM) is designed to automatically notify designated users of alarms and events via their cell phone, pager or PC. The APM software provides the solution needed to help users quickly identify system abnormalities and take appropriate action.



by Schneider Electric

## Features and Benefits

**Flexible Message Delivery** — Supports many options for relaying alarms and events to various recipients:

- Electronic mail (Email)
- Traditional dial-up Pager (TAP)
- Text messaging for cell phones (GSM Modem)
- Short messaging peer to peer protocol (SMPP)
- Simple Network Paging Protocol (SNPP)

**Browser User Interface** — Through a standard web browser interface, users can configure the software, perform post event analysis, and view, sort and filter instantaneous and historical alarms

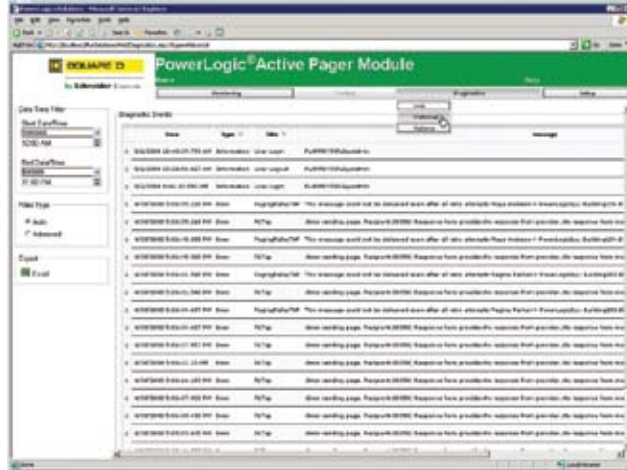
**Scheduling Recipients for Paging** — allows scheduling of alarm notifications according work schedules. The APM is flexible enough to accommodate any combination of shift and work day.

**Alarm Consolidation and Filtering** — prevents an "alarm avalanche" during a major event in which numerous are sent from several sources. The APM allows users to filter alarms by type and then consolidate those alarms to reduce unnecessary notifications

**Maintenance Mode for Alarming** – permits individual sources of alarms and events to be placed into maintenance mode. In maintenance mode the APM receives and logs specific alarm and event messages from the alarm and event servers but suppresses them from being sent out to recipients. This is useful when electrical or system equipment is being repaired, eliminating alarms.

**Minimize False Alarm Paging** – offers a setting to delay sending any pages for a certain period of time. This gives the user an opportunity to acknowledge and correct the alarm conditions before alerting others of conditions that could be resolved quickly.

**Operates in the Background** – APM server runs as a service. This means that every time the operating system starts up, the APM will also start automatically and will run until either the computer is powered down or the service is manually stopped.



*Receiving consumption alarms or power quality events directly to your pager or cell phone gives you time to react before your company sets a new peak or causes downtime. Alarm notification can also be configured per user with time of day scheduling so only the responsible operations person per shift is being notified.*

## System Requirements

For Software:

- PowerLogic SCADA software
- PowerLogic Sequence of Events Recorder
- PowerLogic System Manager Software (version 4.0 SU2 and higher)

For Modems: External U. S. Robotics 56K,  
TAP Protocol  
Alphanumeric Text

For Email: SMTP Server  
E-mail to Pager, Cell Phone, or PC

For Text Messaging: GSM Modem, SNPP or SMPP

## Need more information?

Contact your local Schneider Electric / Square D representative or contact Power Management Technical Support.

## Schneider Electric - North American Operating Division

295 Tech Park Drive  
LaVergne, TN 37086  
Tel: 615-287-3500  
www.PowerLogic.com

